

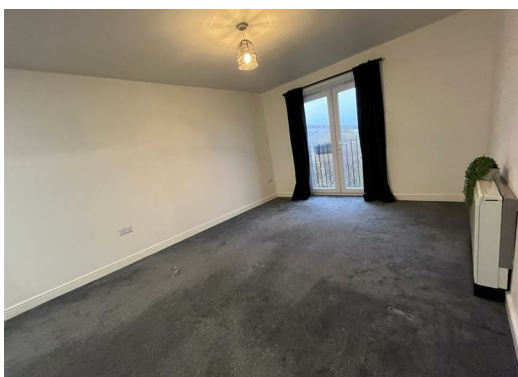


Clough Gardens, Haslingden, BB4 5AP £750 PCM

MUST VIEW

Lifestyle Sales & Lettings are proud to offer a two-bedroom, second floor apartment situated in a scenic area of Haslingden with a JULIET BALCONY and allocated parking. This property consists of a hallway with a storage cupboard, a three-piece bathroom suite with a shower, one double bedroom, one single bedroom and an open plan kitchen/lounge. The apartment benefits from electric heating and uPVC double glazing. The property has benefits of motorway networks and close to shops, restaurants, schools, and other transport links. Ideal for working professionals!!

IMPORTANT NOTE TO CONSIDER: To Pass the referencing earnings threshold for this property you must have a combined household annual income of £22,500. Please only enquire for a viewing if you meet this criteria.



Disclaimer:

These particulars, whilst believed to be accurate are set out as a general guideline and do not constitute any part of an offer or contract. Intending Tenants should not rely on them as statements of representation of fact, but must satisfy themselves by inspection or otherwise as to their accuracy. Please note that we have not tested any apparatus, equipment, fixtures, fittings or services including gas central heating and so cannot verify they are in working order. Although we try to ensure accuracy, if measurements are used in this listing, they may be approximate. Therefore if intending Tenants need accurate measurements to order carpeting or to ensure existing furniture will fit, they should take such measurements themselves. Photographs are reproduced general information and it must not be inferred that any item is included for let with the property. Please contact 01706 823 131 for further details.

Viewing:

Viewing strictly by appointment through Lifestyle Sales and Lettings.

